



**POLOFIN**  
G R O U P

## Company profile







# Company profile





## Polofin group

**Polofin Srl è la società capogruppo di Cibir Srl, Keyfrost Srl, Krios Srl e Frigotel Srl.**

**La società capogruppo svolge le funzioni di coordinamento amministrativo, produttivo e di supporto tecnico e industriale alle proprie controllate. Polofin e le sue società controllate hanno raggiunto un ruolo di primaria importanza nel mercato della refrigerazione commerciale e industriale.**

**Polofin srl is the parent company of Cibir Srl, Keyfrost Srl, Krios Srl and Frigotel Srl.**

**The parent company carries out administrative and productive coordination activities, besides technical and industrial support to its subsidiaries. Polofin and its subsidiaries have reached a central role in the commercial and industrial refrigeration field.**



# Le aziende del gruppo

## The group companies

**CIBIN**

**Keyfrost**

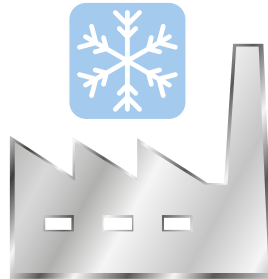
**KRIOS®**

**FRIGOTEL®**



# Le attività delle aziende del gruppo

## The activities of the group companies



### Refrigerazione industriale

#### Industrial refrigeration



**Produciamo macchine ed impianti per la refrigerazione industriale delle imprese che operano nella grande distribuzione organizzata, nell'industria di trasformazione di prodotti agroalimentari e nell'industria del vetro.**

We manufacture equipment and systems for industrial refrigeration of Companies operating in the large-scale retail trade, the food processing industry and the glass industry.



## Refrigerazione commerciale commercial refrigeration



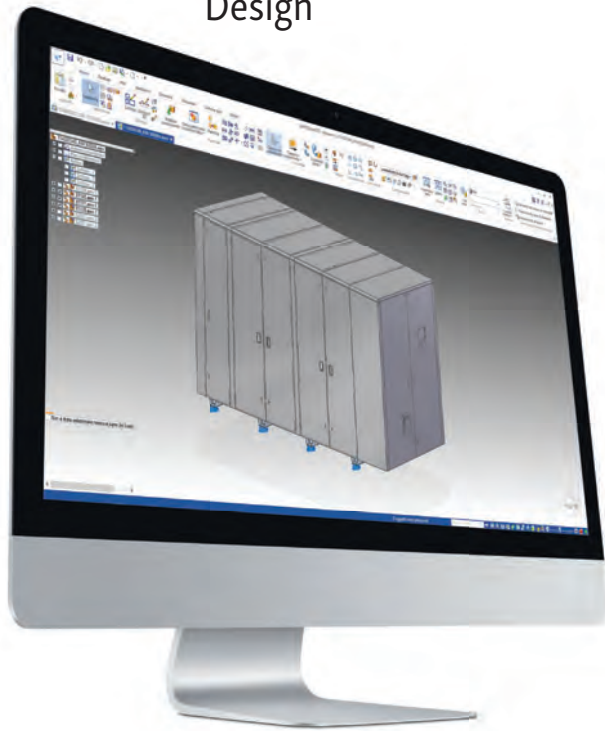
**Produciamo macchine ed impianti per la refrigerazione commerciale delle imprese che operano nella distribuzione alimentare, nella trasformazione agroalimentare e nella ristorazione.**

We manufacture units and systems for commercial refrigeration of companies operating in food distribution, food processing and catering.



# Le nostre competenze Our expertise

## Progettazione Design



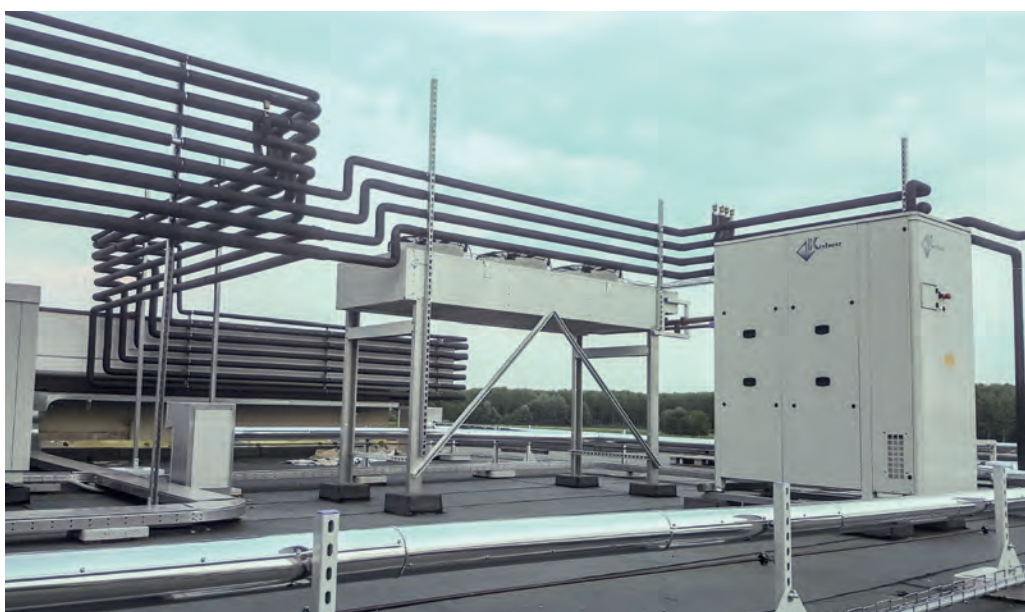
## Produzione Production







## Installazione Installation



## Controllo remoto Remote Control





## Le persone Staff

**Siamo un gruppo che si fonda sul valore dei nostri collaboratori.**  
We are a group based on our collaborators' qualities.

- 104** Totale dipendenti  
Number of employees
  
- 12** Ingegneri  
Engineer
  
- 15** Tecnici specializzati  
Skilled engineers
  
- 33** Addetti linea di montaggio  
Assembly line operators
  
- 20** Addetti macchine a controllo numerico  
Numerical control machines operators
  
- 10** Impiegati amministrativi e commerciali  
Sales and administration department staff
  
- 8** Tecnici frigoristi  
Refrigeration engineers
  
- 6** Addetti Magazzino e logistica  
Warehousing and logistics operators
  
- 43** Collaboratori Network assistenza  
Service network collaborators
  
- 8** Professionisti collaboratori  
Professional collaborators









## Sedi Plants



**36.000 m<sup>2</sup>**  
Area insediamenti produttivi  
Production units area

**24.000 m<sup>2</sup>**  
Area produttiva coperta  
Covered production area



**CIBIN Srl**  
Via Enzo Ferrari,12 - 30027  
San Donà di Piave-Venezia-Italy



**KEYFROST Srl**  
Via Trezza, 47/A - 30027  
San Donà di Piave-Venezia-Italy



**KRIOS COMPONENTI Srl**  
sede legale:  
Via Trezza, 49/A - 30027  
San Donà di Piave  
Venezia - ITALY  
Sede operativa:  
Via Cirgogno, 6 - 30027  
San Donà di Piave



**FRIGOTEL Srl**  
a socio unico  
Via Trezza, 49 - 30027  
San Donà di Piave  
Venezia-Italy



# I nostri marchi

Our brands

## CIBIN



**Refrigerazione commerciale**  
Commercial refrigeration

## KeyFrost



**Refrigerazione industriale**  
Industrial refrigeration



# **KRIOS®**



**Componentistica e meccanica di precisione**  
Precision mechanics and technical components

# **FRIGOTEL®**



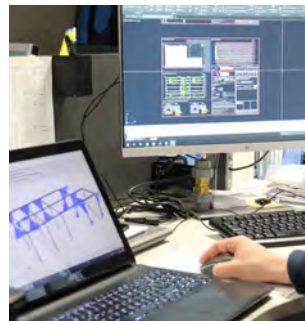
**Telegestione e controllo**  
Remote management and control



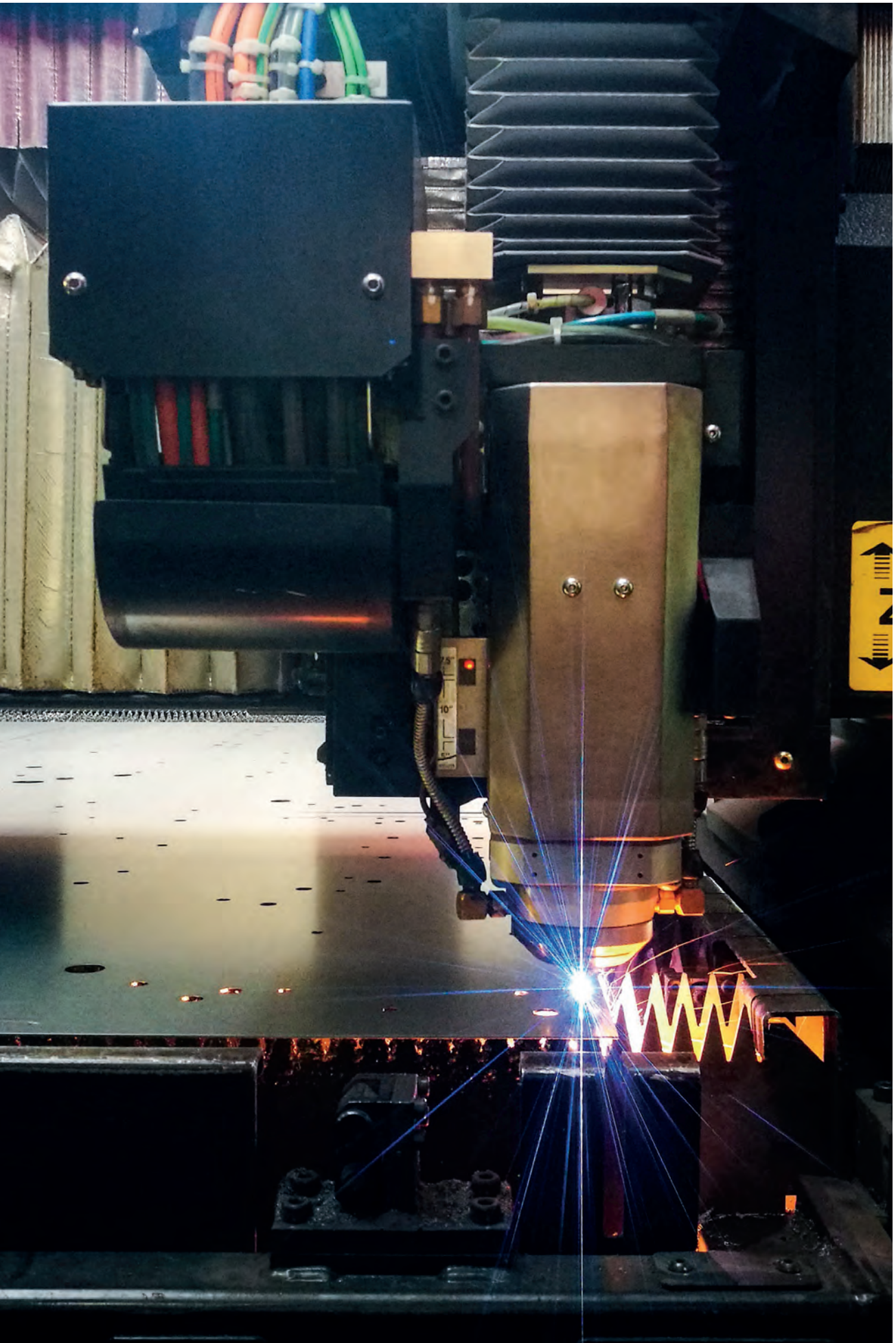


# Progettazione e produzione interna

## Internal engineering and manufacturing







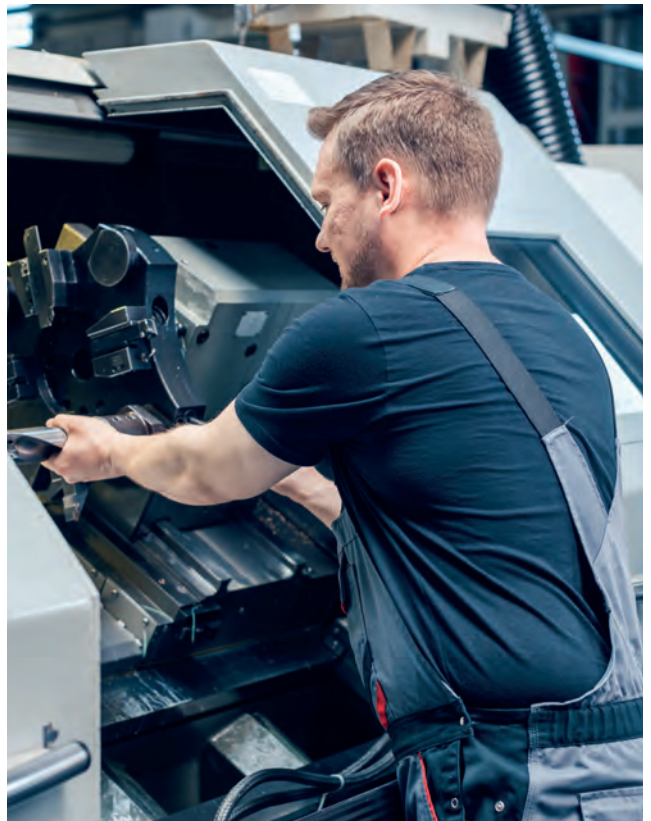
**POLOFIN**

Company profile

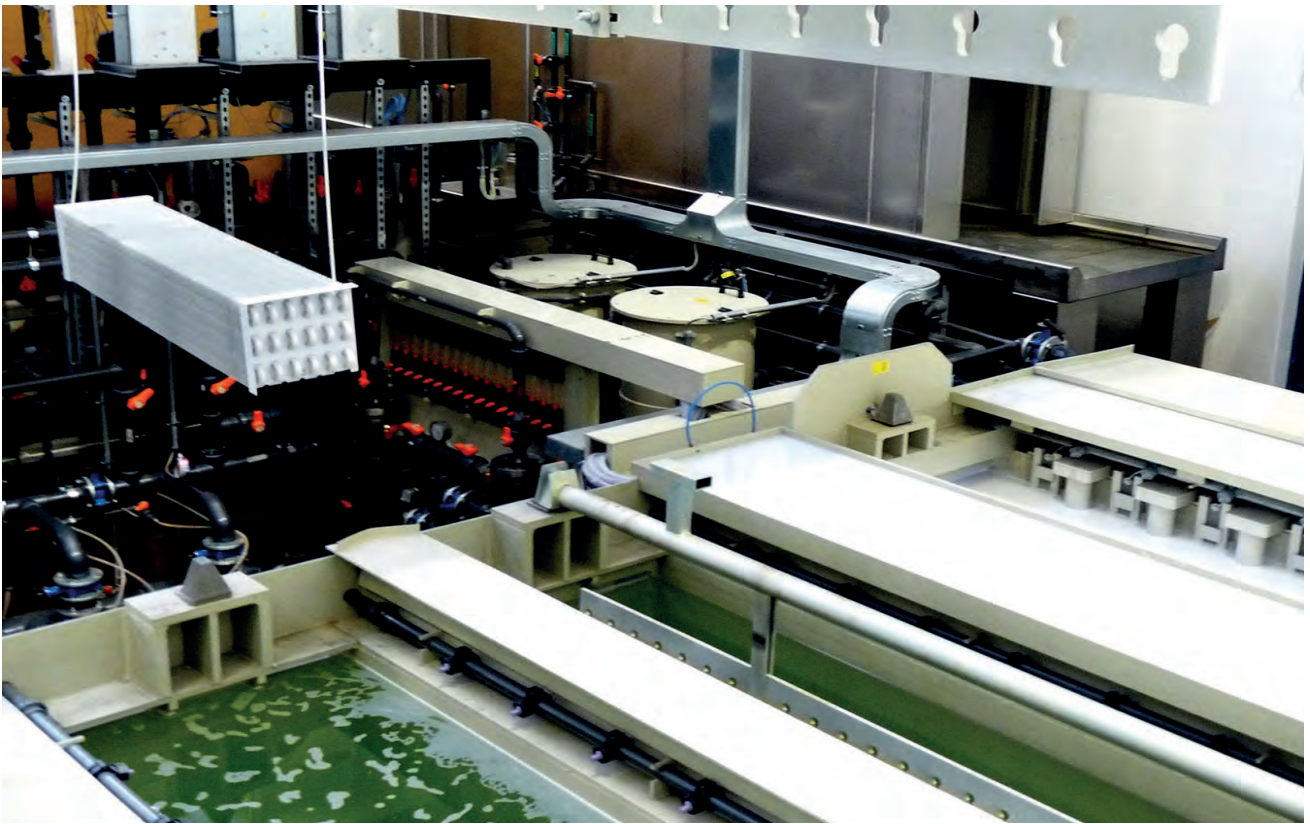








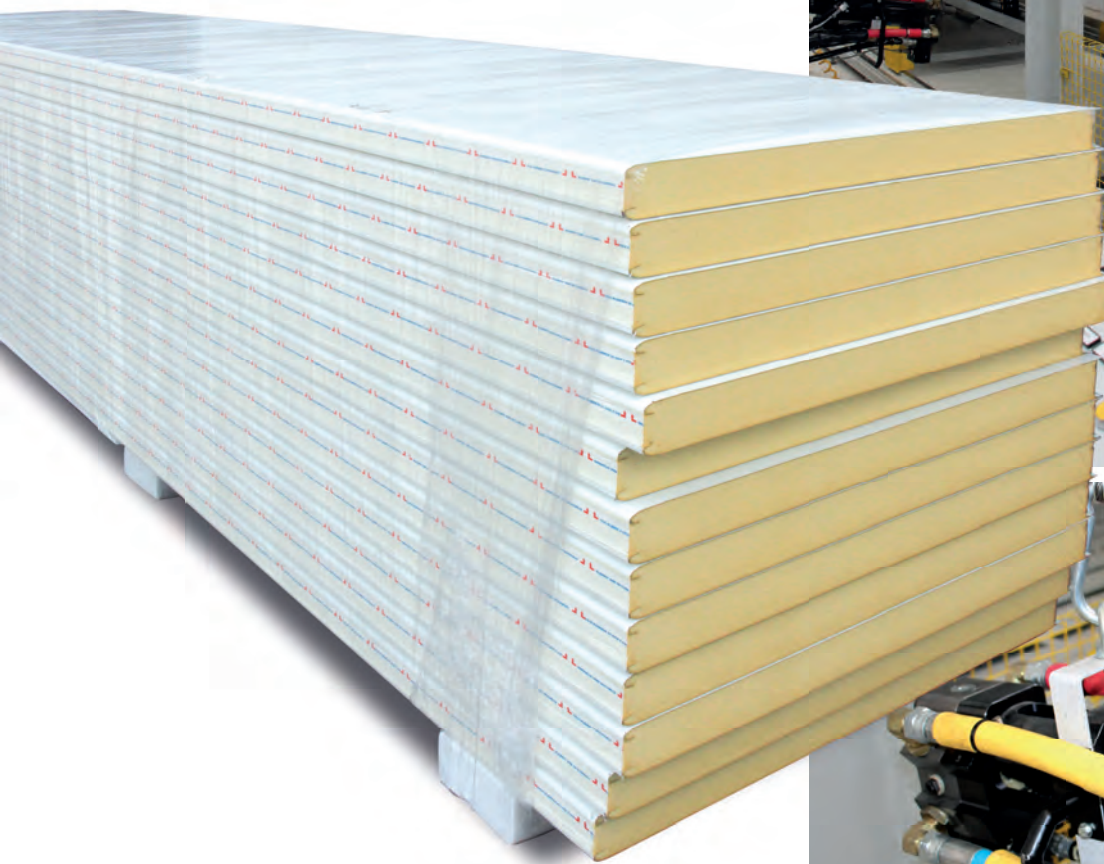


























# Cibin

## Monoblocchi Monoblocks







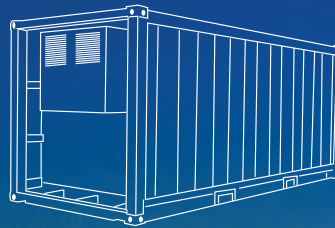




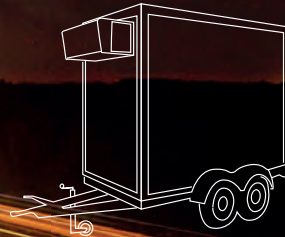
# Cibin

## Trailer Trailer





ALASKA 650 BNHT



ALASKA 240 BNH





# Cantine

## Wine displays and cellars

Imago Hassler Hotel  
Roma - Italy











Ristorante 12 apostoli  
Verona - Italy











Ristorante san domenico  
Imola - Italy







Iper maestoso - hypermarket  
Monza (MB) - Italy



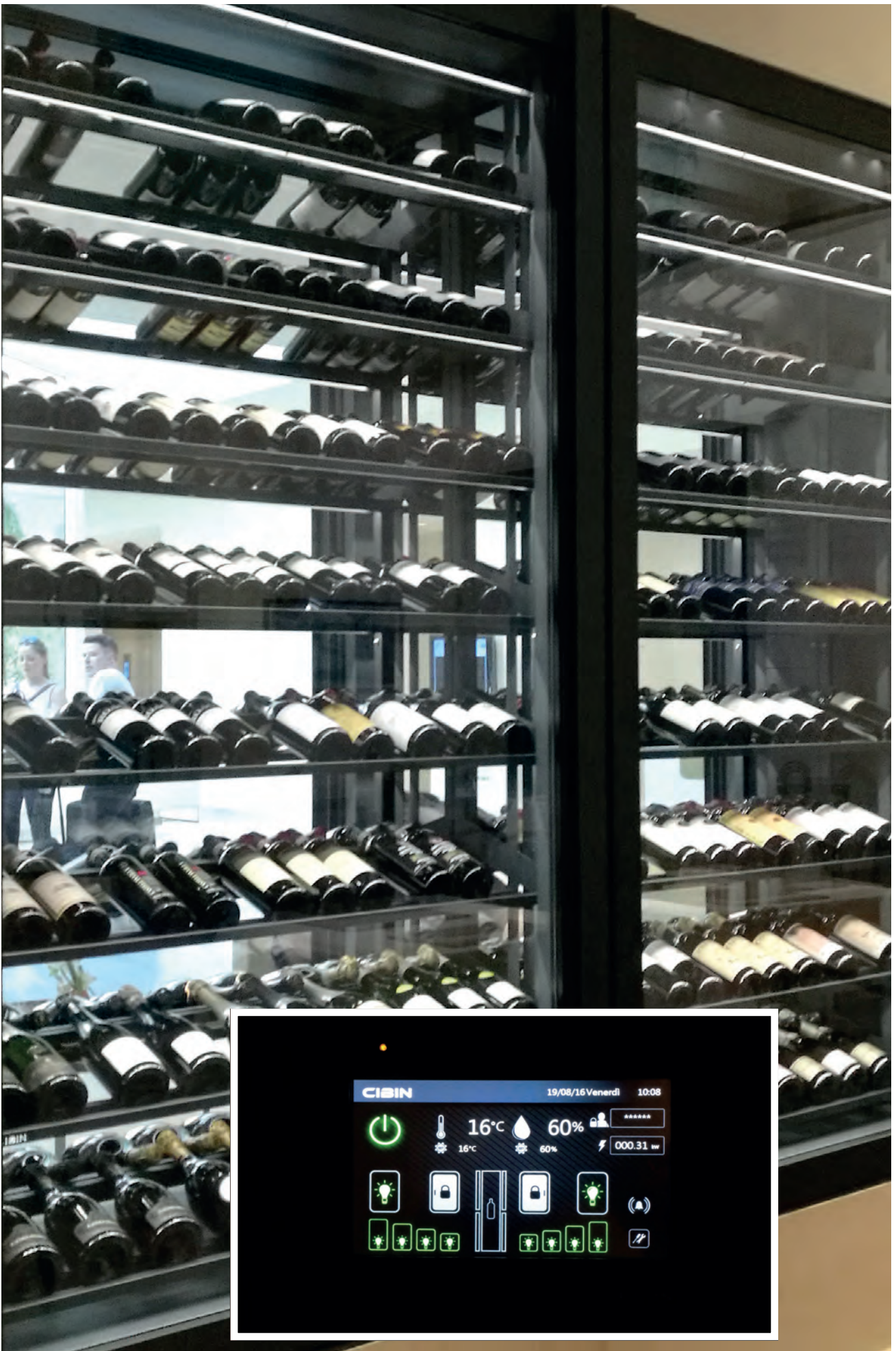




I Portici Hotel  
Bologna - Italy











Tapasotto  
Verona - Italy







the dorchester  
London - UK







le Siman  
Bordeaux - France











**Princi Café**  
Milano - Italy



**Almar Jesolo Resort&Spa Mediterra Restaurant**  
Jesolo - Venezia - Italy







Le Logis de la Cadéne  
Bordeaux - France







Hotel Principe - Ristorante Lux Lucis  
Forte dei Marmi - Lucca - Italy







Hotel Estrel Berlin  
Berlin - Deutschland

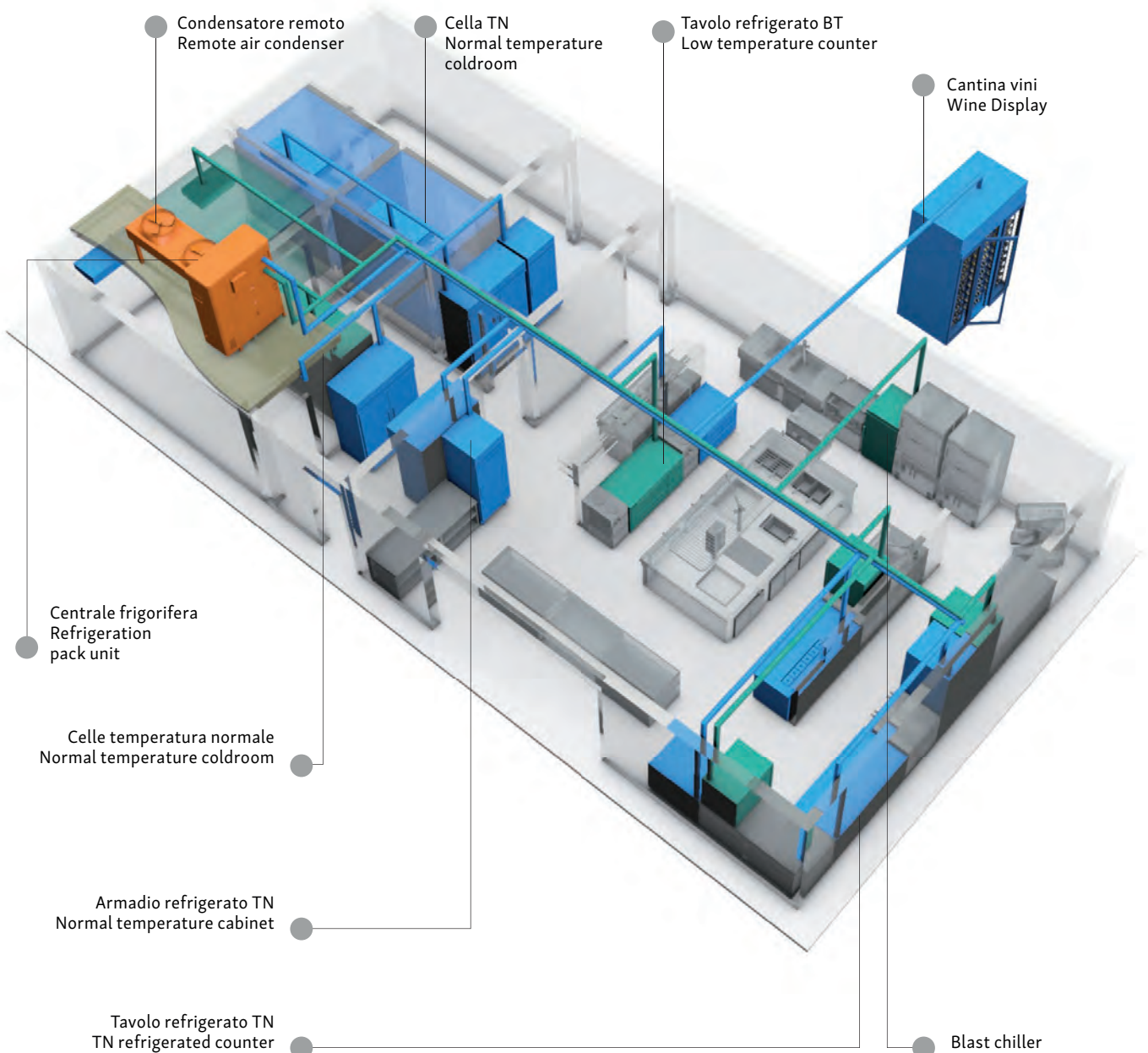






# Cibin

## Impianti frigoriferi centralizzati per la ristorazione Central refrigeration systems for the catering industry





Cavalieri Luxury Hotel La Pergola  
Roma - Italy







Locanda 4 Cuochi  
Verona - Italy



A.O.K.  
London - UK

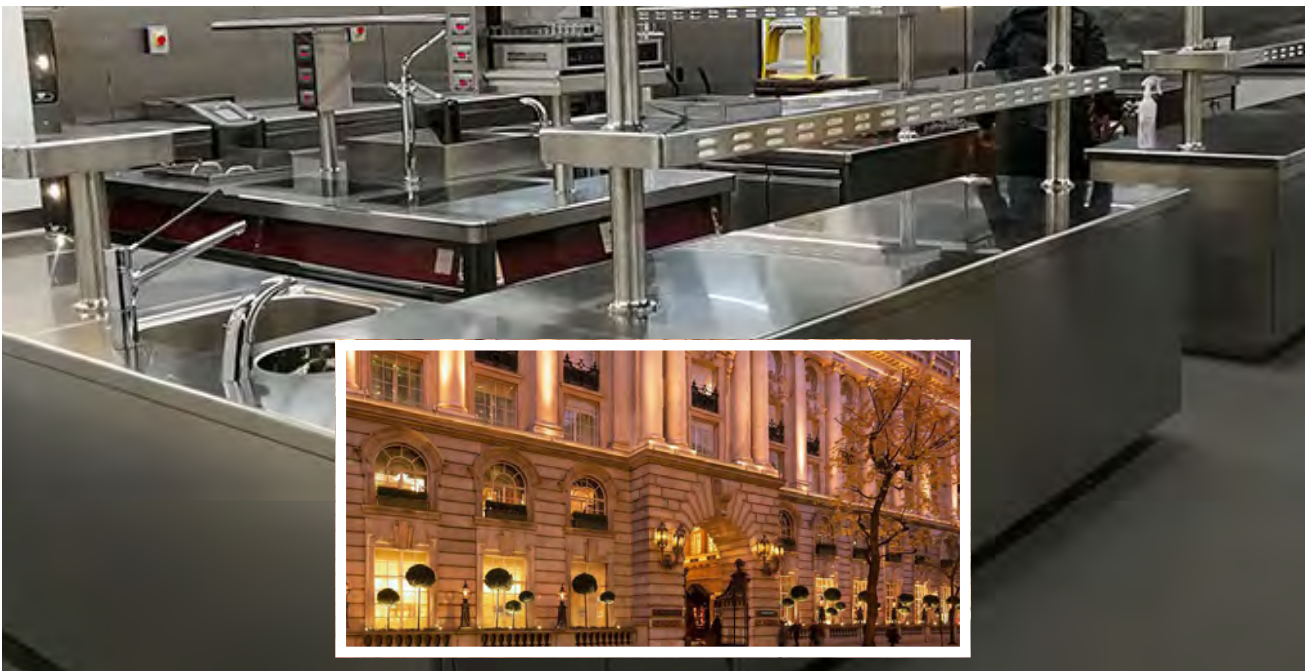




Julie's  
London - UK



Rosewood  
London - UK







The Pantheon iconic Rome hotel  
Roma - Italy



San Domenico  
Imola - Italy





Chiesa del Carmine country house  
Perugia - Italy



Coworth Park  
Berkshire - UK







**Hotel Romeo**  
Napoli - Italy



**Arnolfo**  
Colle Val d'Elsa - Siena - Italy







Hotel Le Fontanelle  
Siena - Italy



Locanda Perbellini Al Lago  
Garda - Verona - Italy







**Dorchester Restaurant**  
London - UK



**Novikov Restaurant**  
Porto Cervo - Italy







Ristorante Lux Lucis hotel Principe  
Forte dei marmi - Italy







**Trussardi alla Scala**  
Milano - Italy



**Armani Nobu**  
Milano - Italy







Ristorante Berton  
Milano - Italy



Angelo's Restaurant  
Preston - UK







**Copan Italia Spa**  
Brescia - Italy



**Enoteca Pinchiorri**  
Firenze - Italy







Casa Perbellini Restaurant  
Verona - Italy



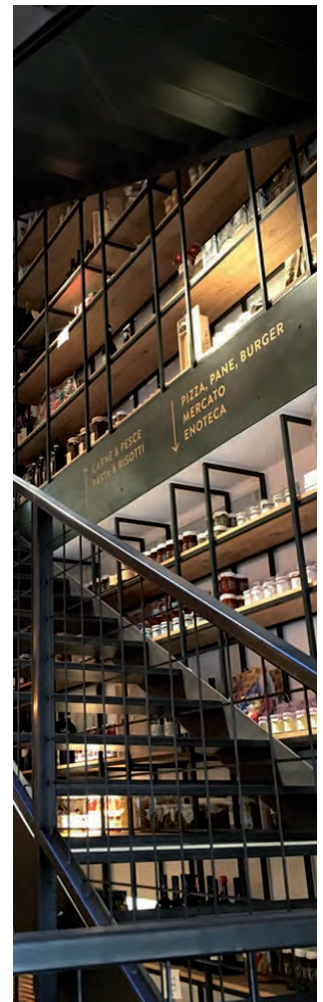
Oxo Tower restaurant  
London - UK



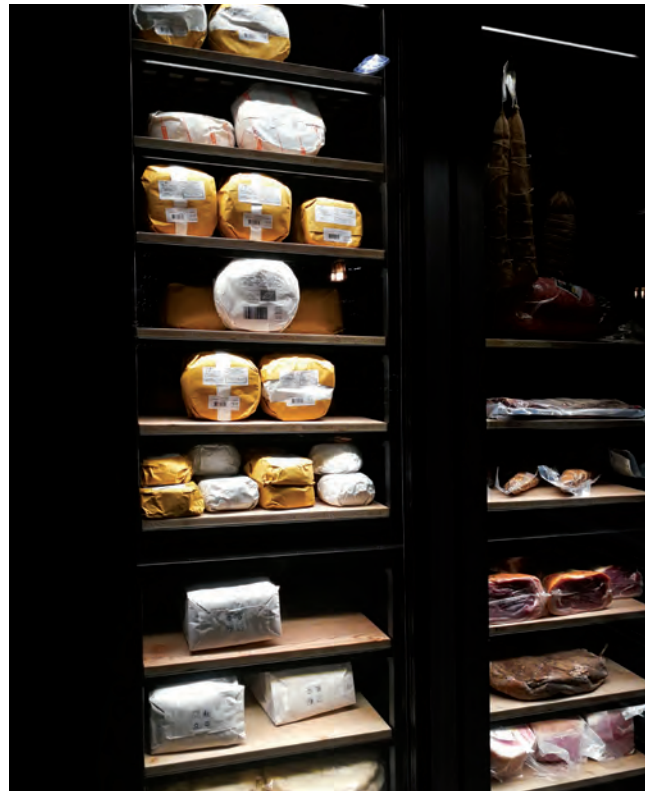




Italia & Amore  
Bolzano - Italy





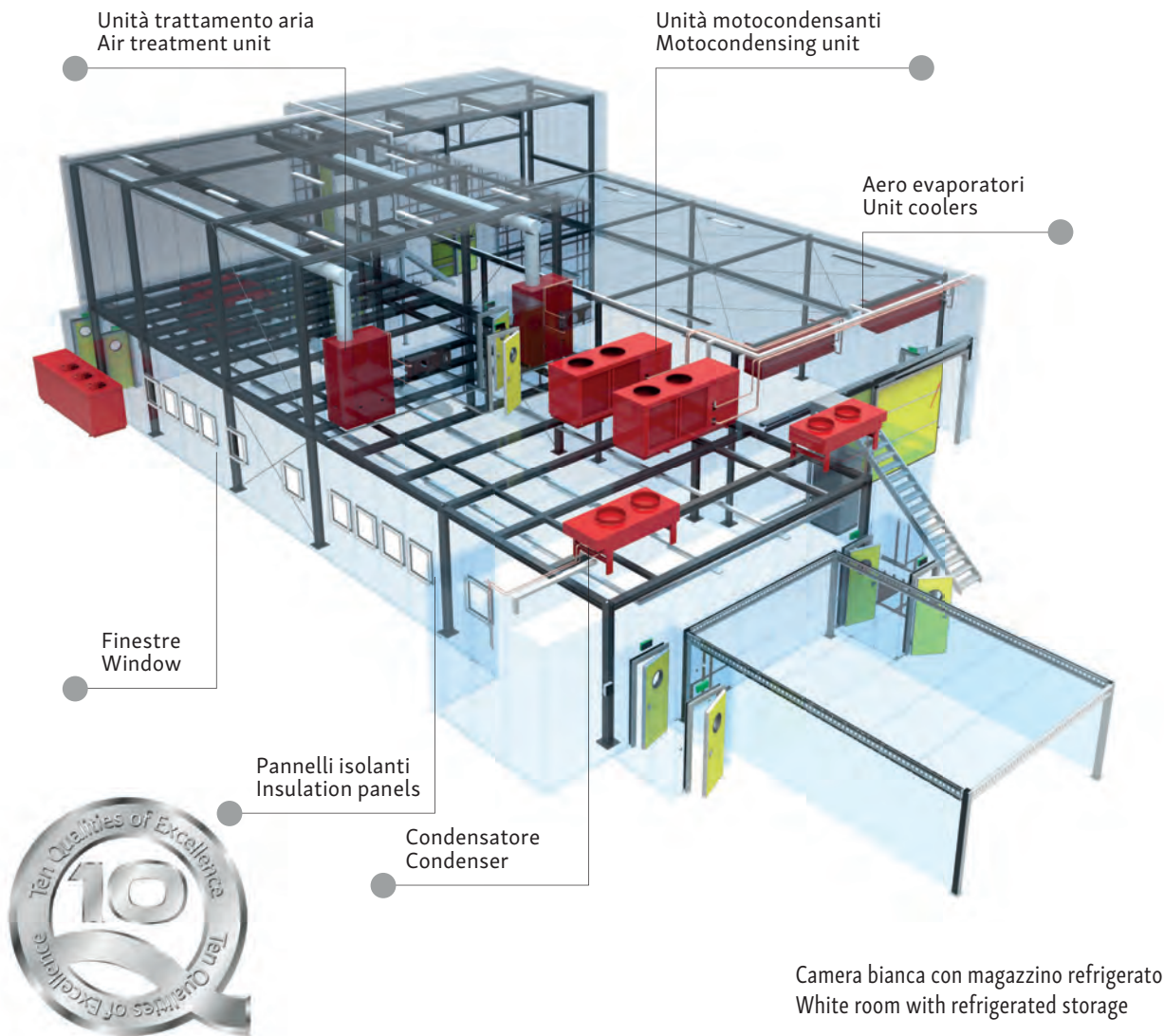






# Keyfrost

## Industria del vetro - Camere bianche Glass industry - Clean rooms









# Keyfrost

## Industria del vetro - Camere bianche Glass industry - Clean rooms











# Keyglass

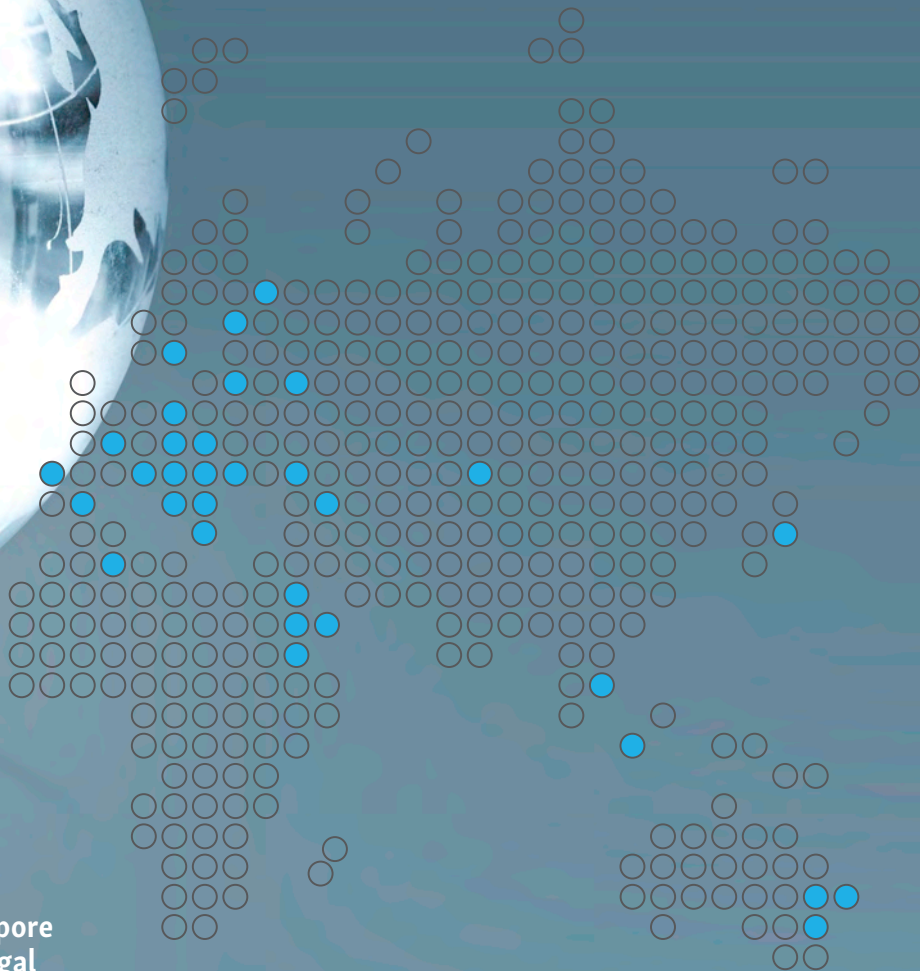
## Worldwide Installations



- Brasile
- Singapore
- Portogallo
- Bielorussia
- Emirati Arabi Uniti
- Inghilterra
- Germania
- Francia
- Giappone
- Polonia
- Croazia
- Argentina
- Canada
- Arabia Saudita
- Estonia
- Algeria
- Albania
- Lituania
- Colombia
- Austria
- Barhein
- Qatar
- Australia
- Stati Uniti

- Romania
- Slovenia
- Spagna
- Kazakistan
- Turchia
- Ungheria
- Vietnam
- Svezia
- Milano (Italia)
- Bergamo (Italia)
- Brescia (Italia)
- Padova (Italia)
- Como (Italia)

- Lamezia Terme (Italy)
- Trento (Italy)
- Treviso (Italy)
- Torino (Italy)



Brazil  
Singapore  
Portugal  
Belarus  
United Arab Emirates  
United Kingdom  
Germany  
France  
Japan  
Poland  
Croatia  
Argentina  
Canada  
Saudi Arabia  
Estonia  
Lithuania

Algeria  
Albania  
Columbia  
Austria  
Bahrain  
Qatar  
Australia  
Unites States  
Romania  
Slovenia  
Spain  
Kazakhstan  
Turkey

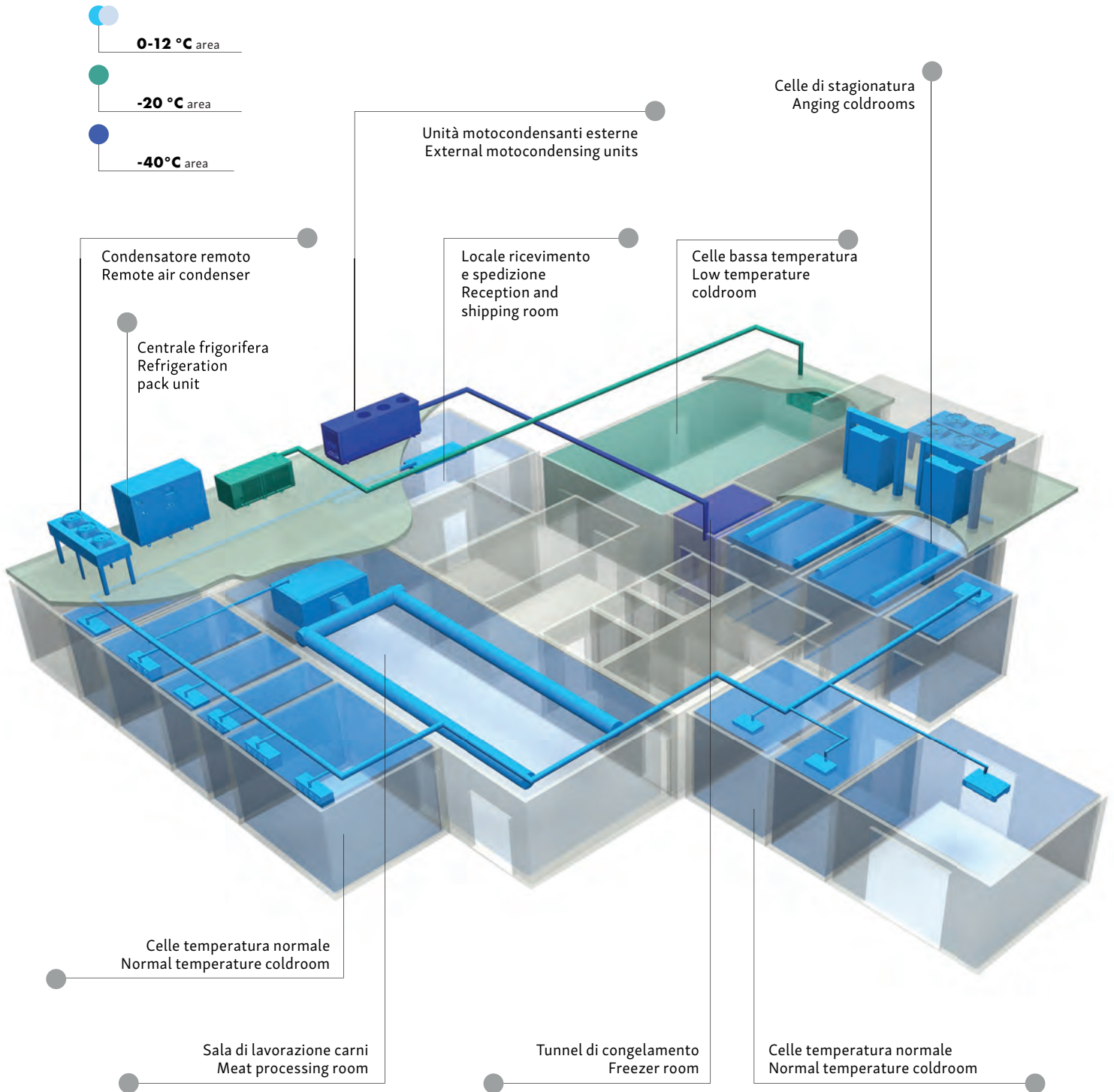
Hungary  
Vietnam  
Sweden  
Milano (Italy)  
Bergamo (Italy)  
Brescia (Italy)  
Padova (Italy)  
Como (Italy)  
Trento (Italy)  
Lamezia Terme (Italy)  
Treviso (Italy)  
Torino (Italy)  
Trento (Italia)





# Keyfrost

## Industria alimentare: salumifici Cured meats industry









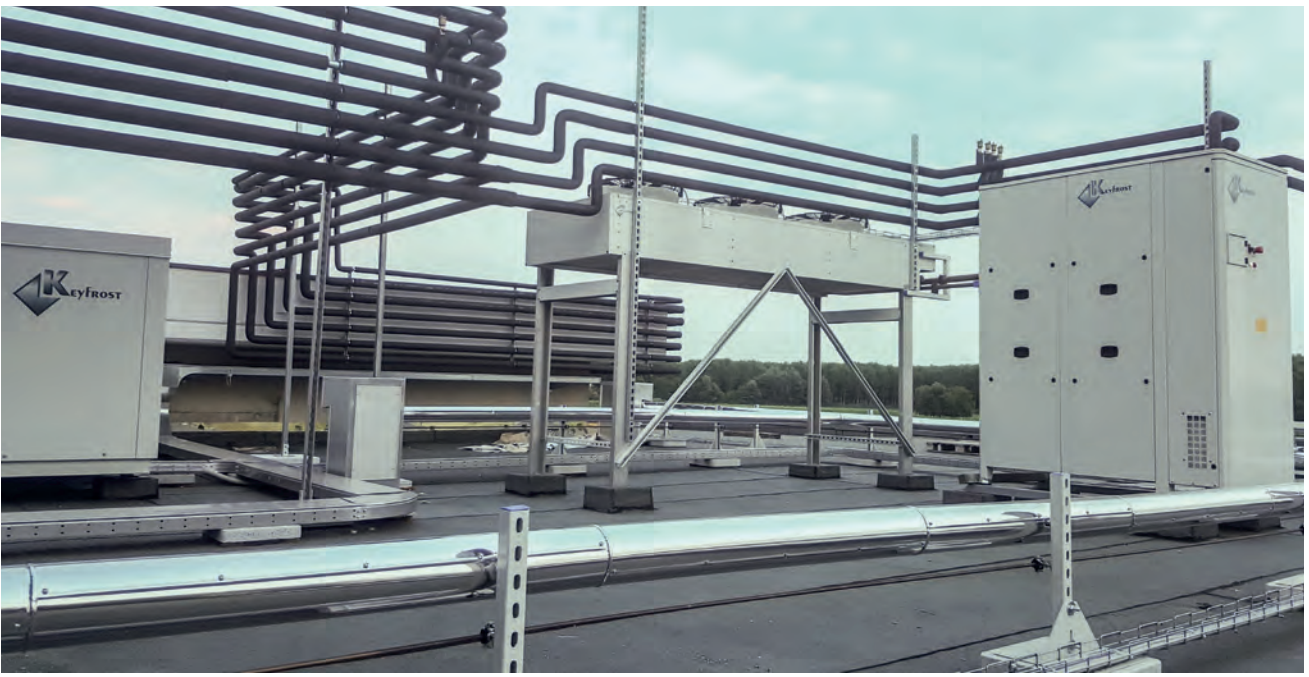
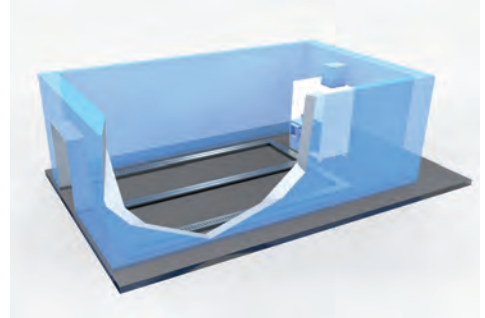
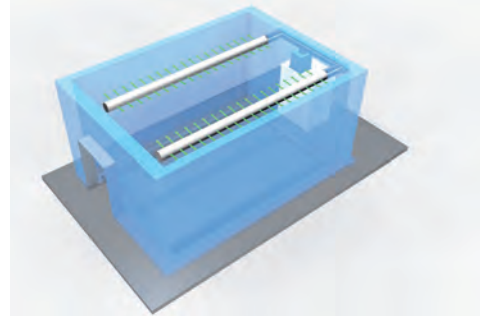


# Keyfrost

## Industria alimentare: salumifici Cured meats industry





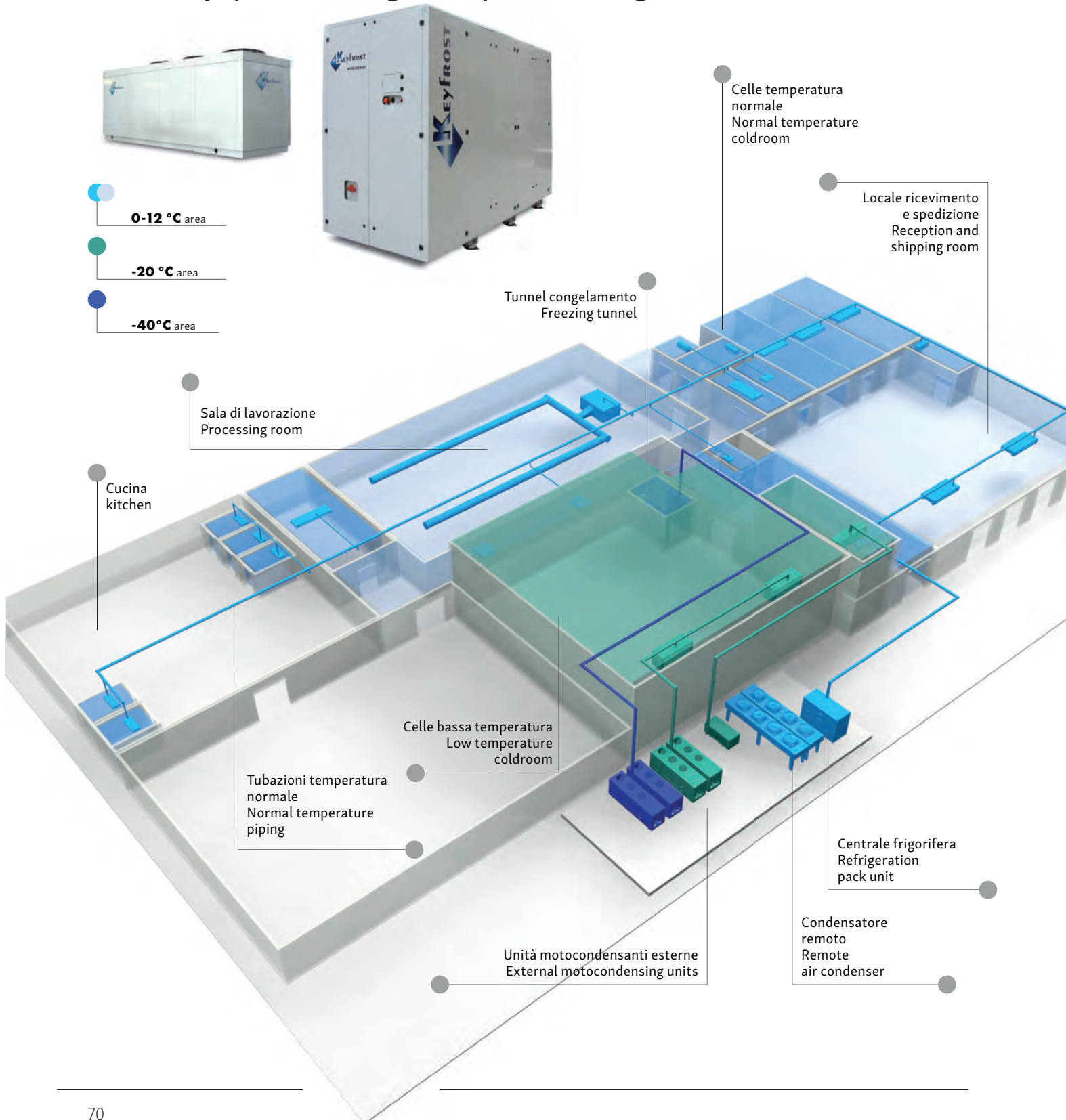






# Keyfrost

## Industria alimentare: lavorazione e conservazione del pesce Industry processing and preserving of fish



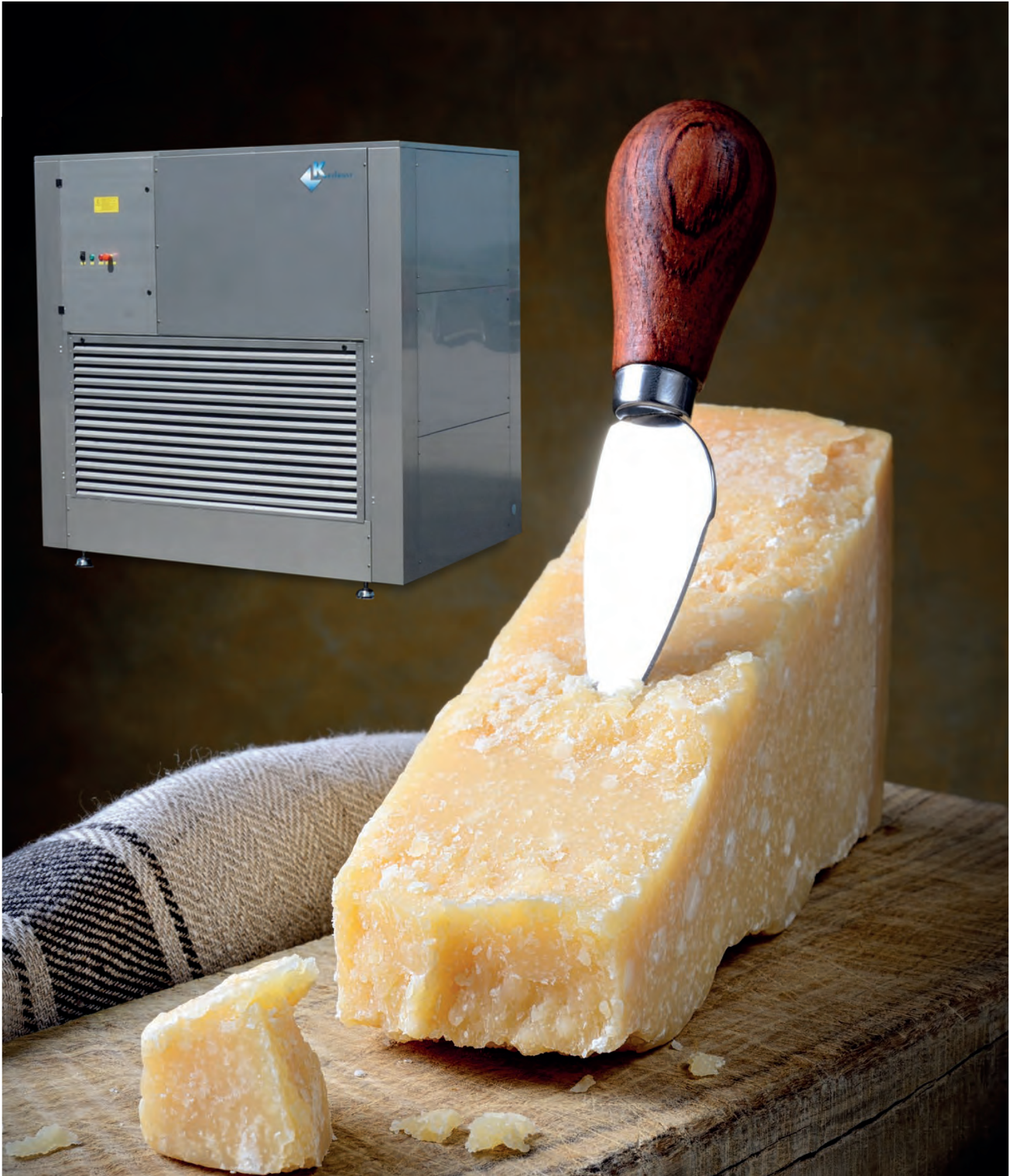






# Keyfrost

## Industria alimentare: caseifici Cheese factory





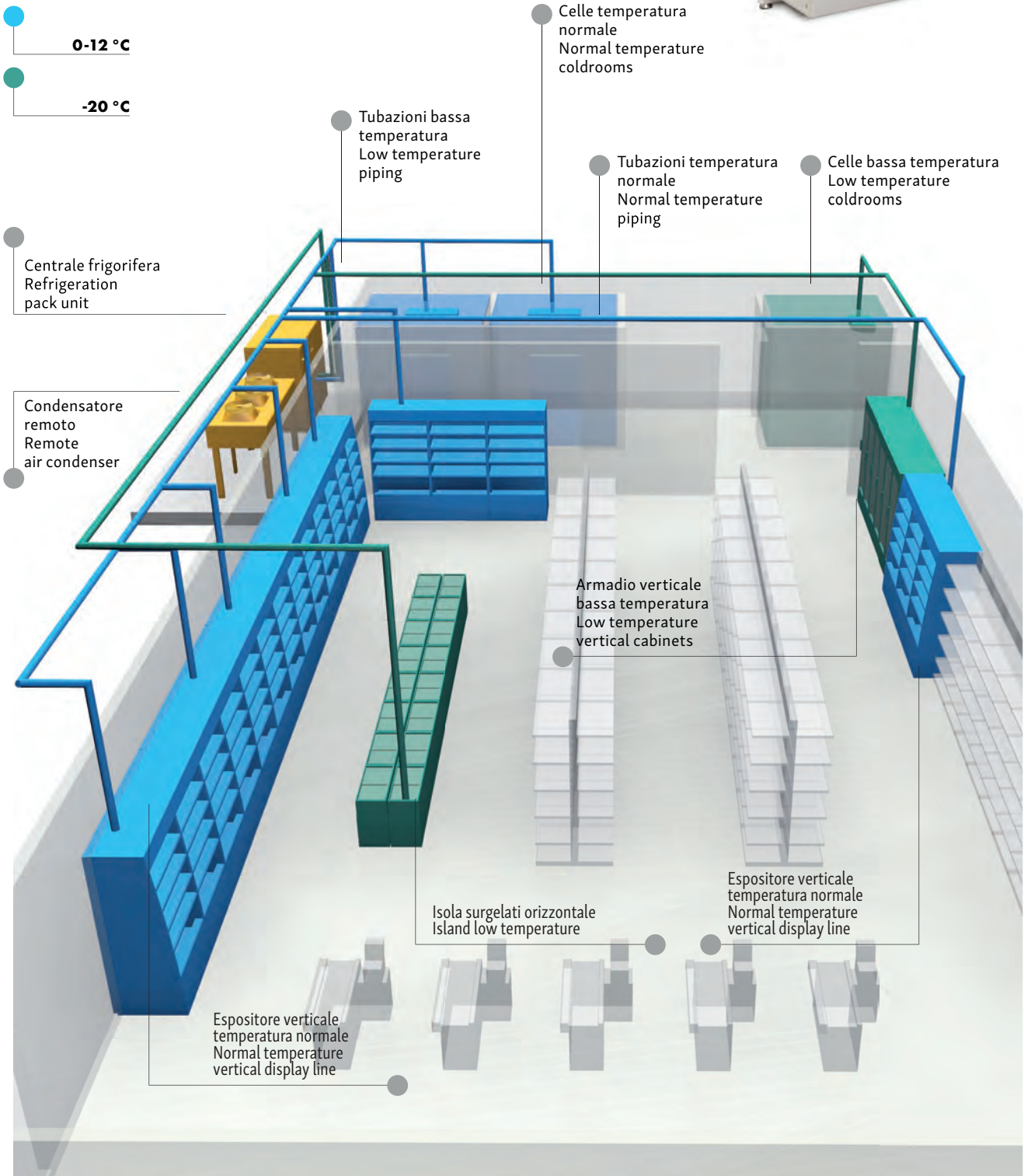






# Keyfrost

## Centrali frigorifere per GDO Refrigeration pack unit for large scale distribution





Armadio verticale  
bassa temperatura  
Low temperature  
vertical cabinets line

Isola surgelati orizzontale  
Island low temperature





# Keyfrost

## Abbattitori Blast chillers





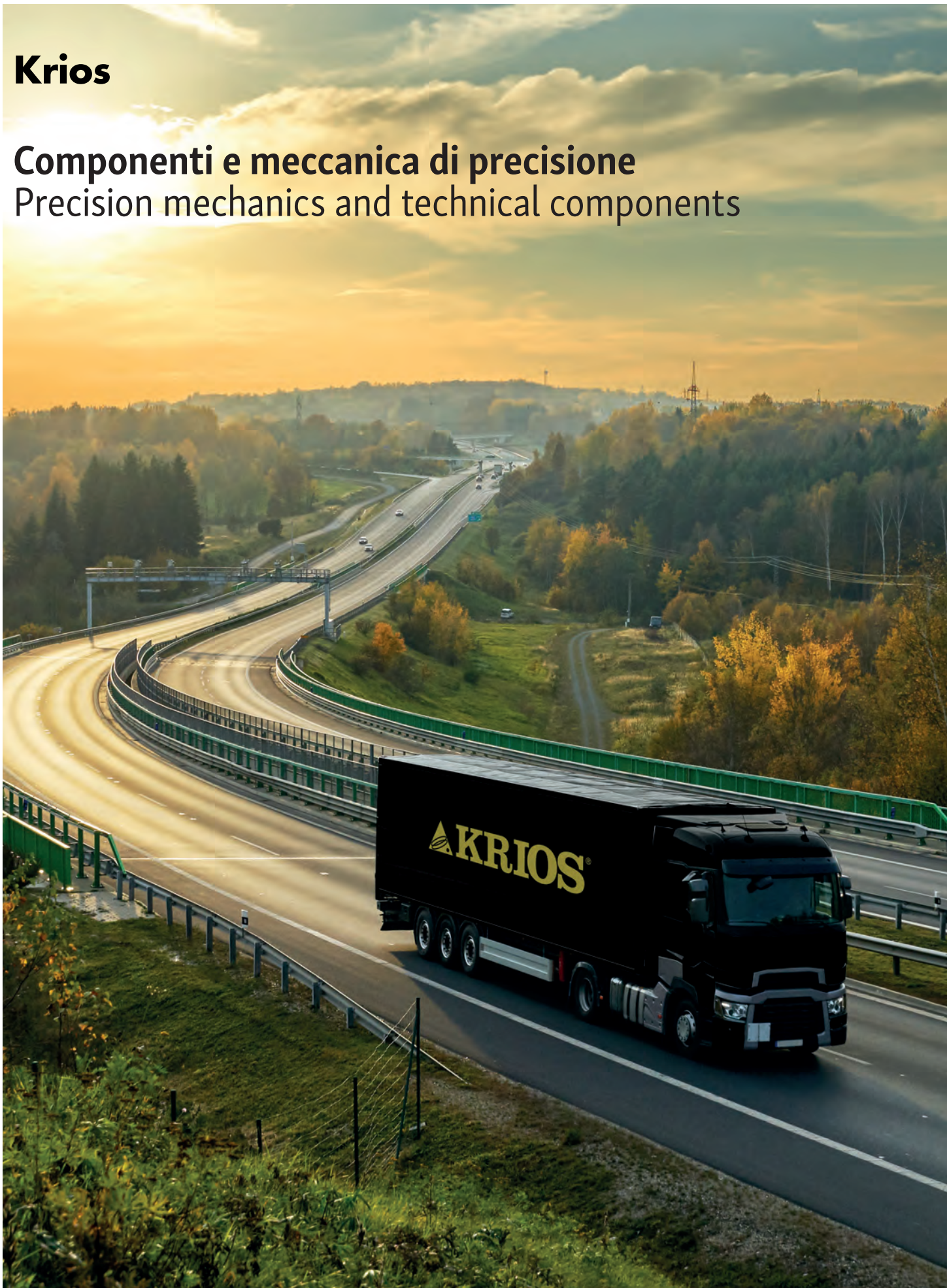






# Krios

## Componenti e meccanica di precisione Precision mechanics and technical components











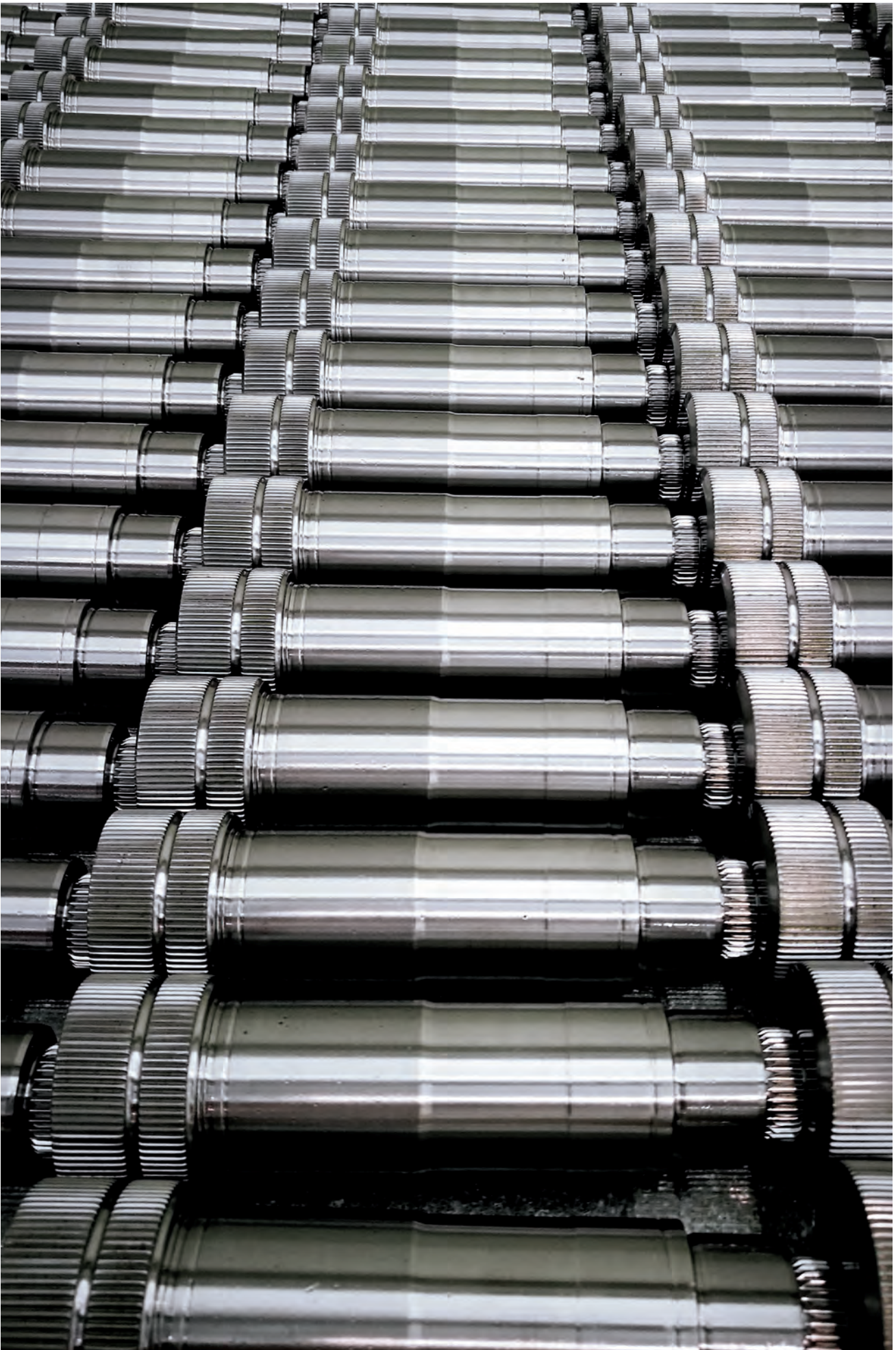




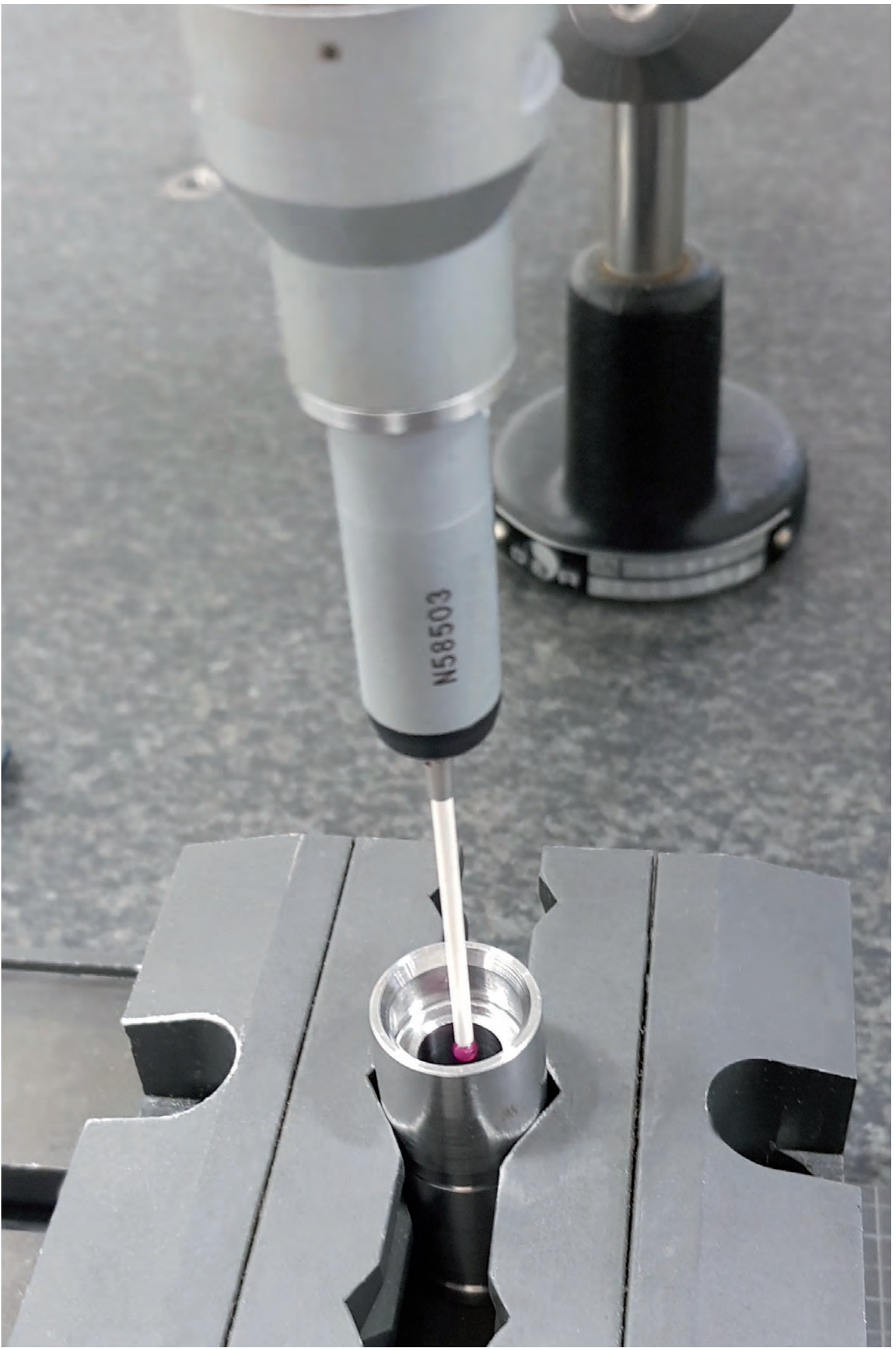


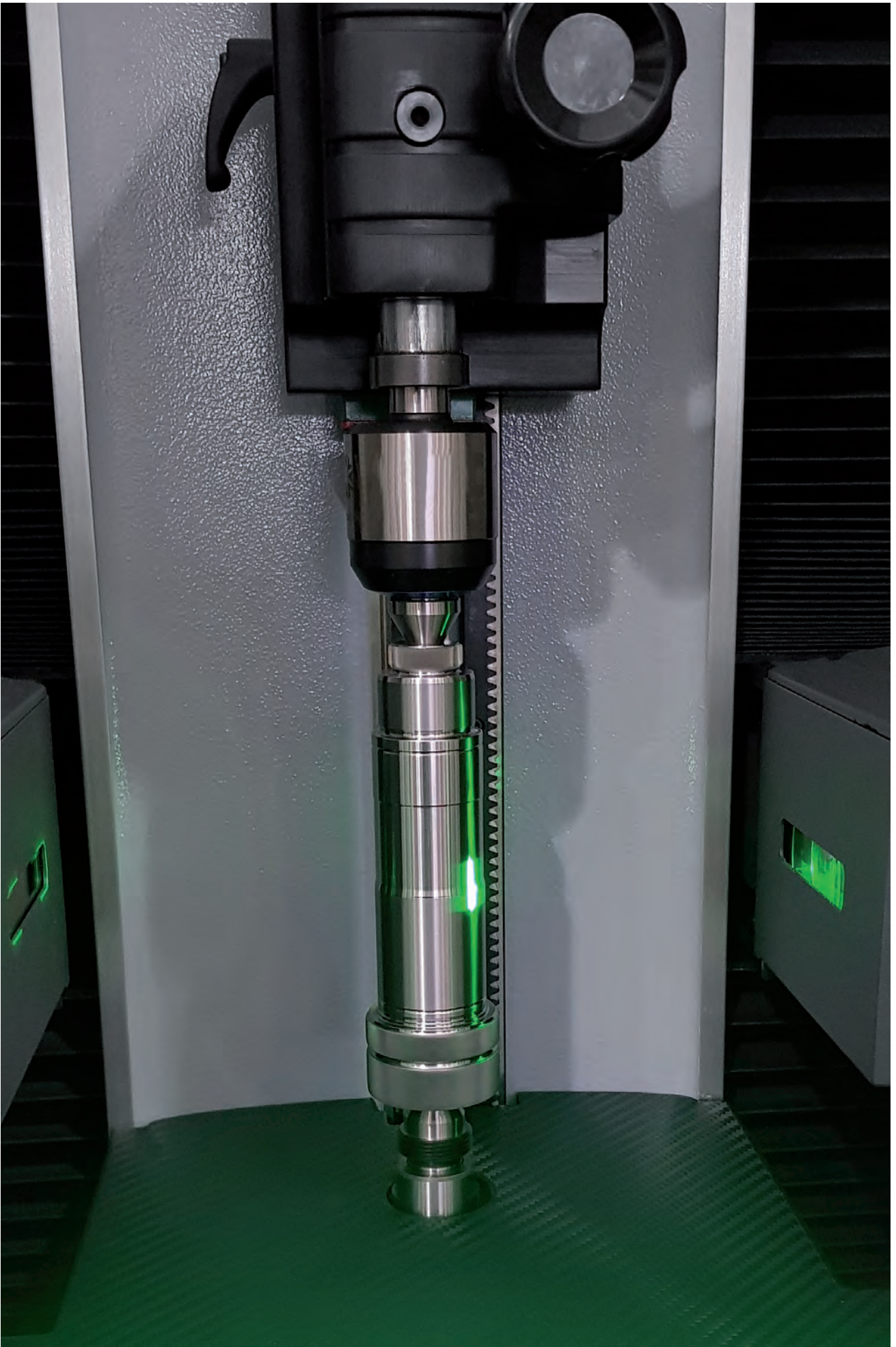




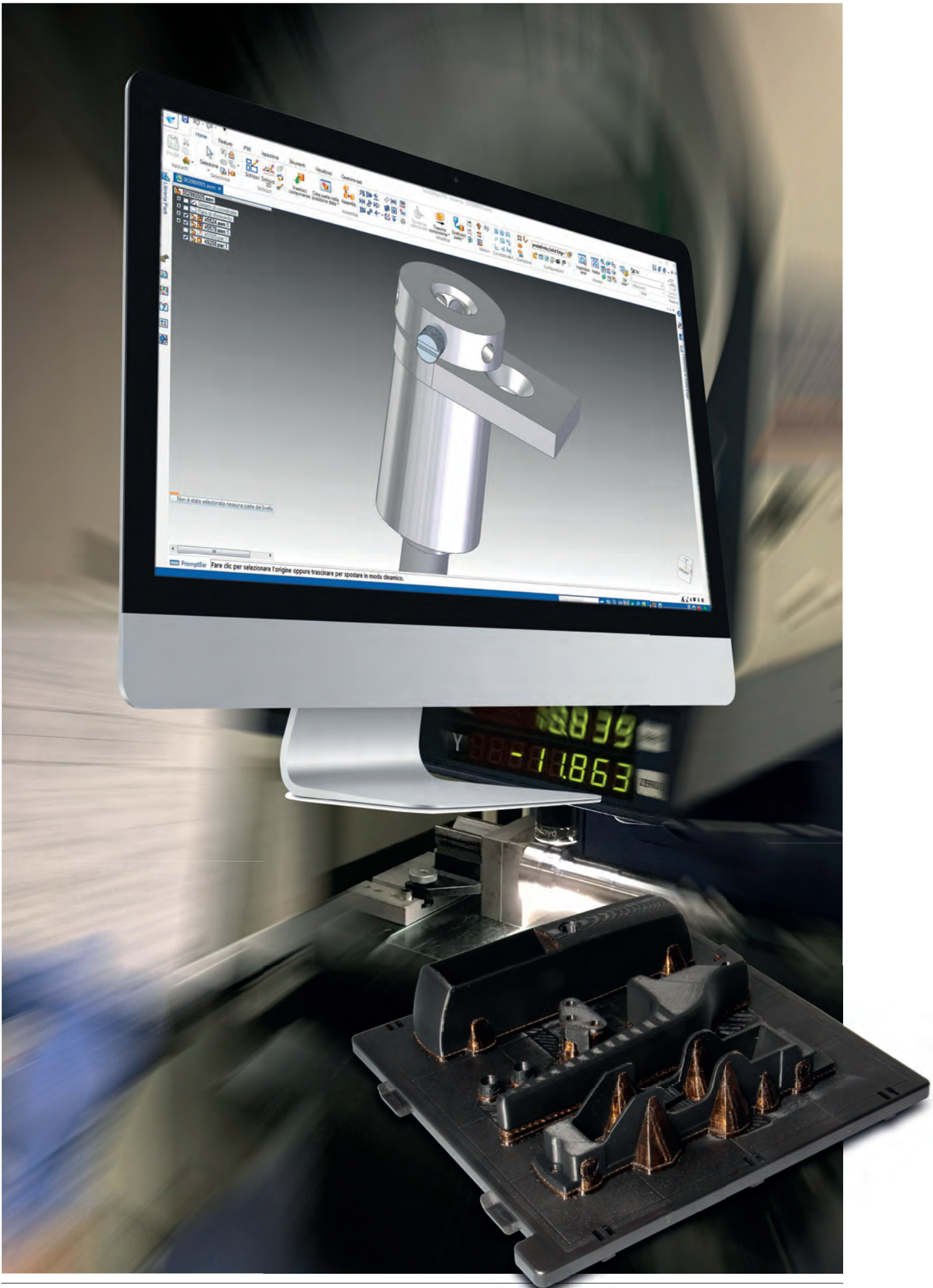














### Vetrina verticale

Showcase

- Chiusura elettrica con radiocomando  
Electrical lock with remote control



Cremagliera  
Shelf pilaster



- Cerniera per ritorno porta verticale.  
Pivot hinge for vertical door return, with torsion spring.



- Maniglia per porte verticali e orizzontali.  
Handle for vertical and horizontal doors.



- Cerniera a barra di torsione per ritorno porta verticale.  
Hinge with torsion bar for vertical door return.



Serrature a chiavistello  
Locks with latch



Piede regolabile.  
Adjustable feet.







**Armadio refrigerante**  
Refrigerating cabinet



Serrature a pistoncino  
Piston locks



Staffe  
Brackets



Cerniera in zama  
per ritorno porta  
Zamak pivot hinge  
for door return

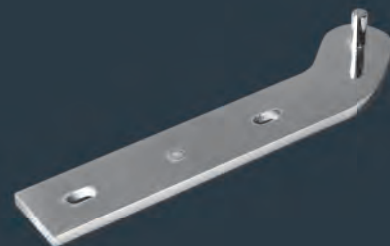


Tappi  
Plugs

Piedi  
Feet



Staffe  
Brackets





**Tavolo refrigerante**  
Refrigerated table

Chiusura a scatto  
Latch



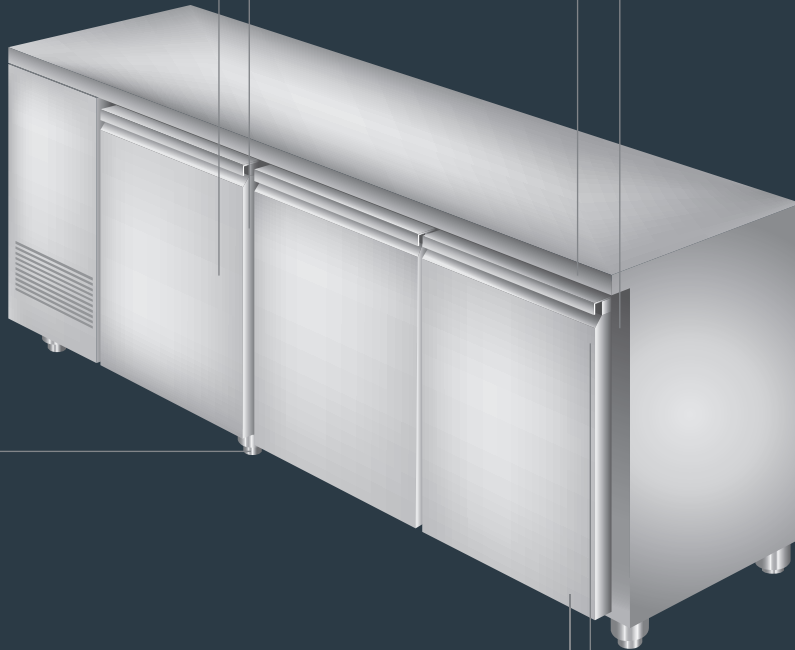
Cerniere  
Hinges



Staffe  
Brackets



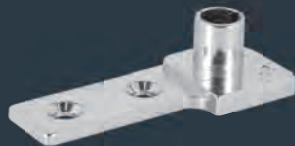
Cerniera in composito  
per ritorno porta  
Composite pivot hinge  
for door return



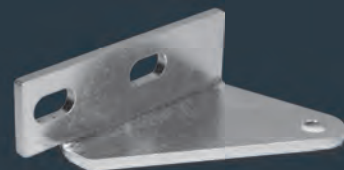
Piedi  
Feet



Basetta passacavo  
Cable gland base



Staffe  
Brackets







### Vetrina ad ante scorrevoli

Showcase with sliding doors

Serrature per porte scorrevoli  
Lock for sliding doors



Chiusure  
Locks and latches



Reggi cristallo a U  
U crystal glass holder



Morsettiera cromata per vetrina  
Chromium-plated terminal for display counter



Chiusure  
Locks and latches



Ruote in nylon  
per porte scorrevoli  
Nylon wheels for sliding doors

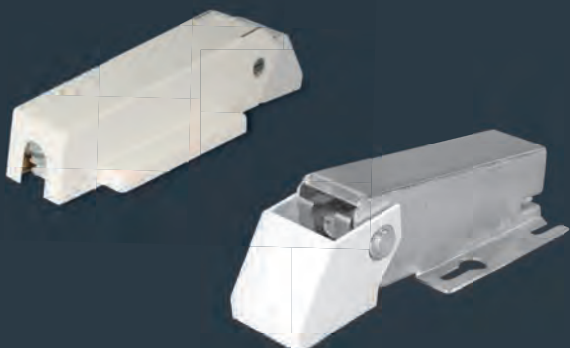




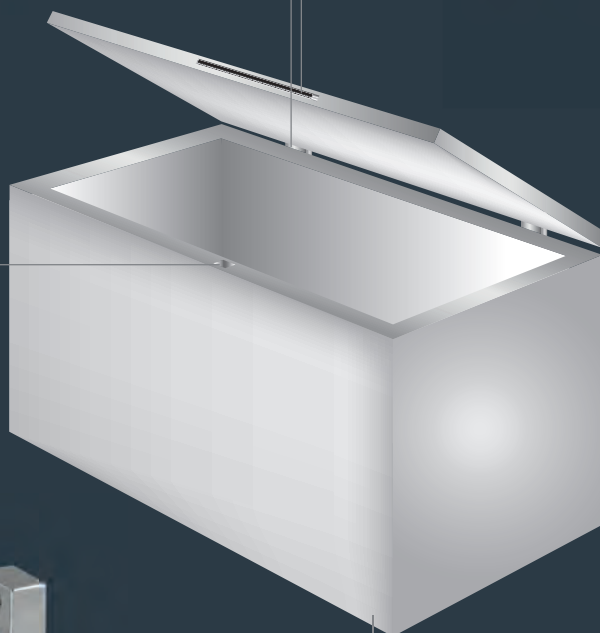
## Congelatore a pozzo

Chest freezer

Cerniera auto-bilanciante  
Self-balancing hinge



Maniglie  
Handles



Serrature  
Locks



Ruota unidirezionale  
Unidirectional wheel





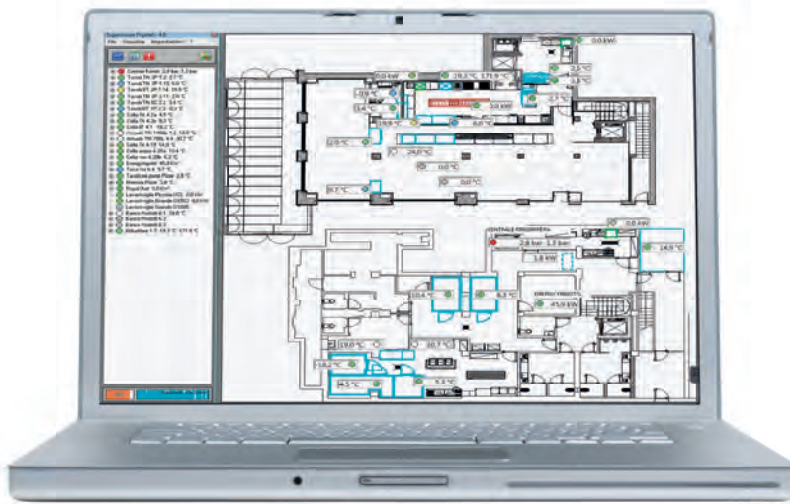


# Supervisione **FRIGOTEL**<sup>®</sup>

## Frigotel<sup>®</sup> Supervision system

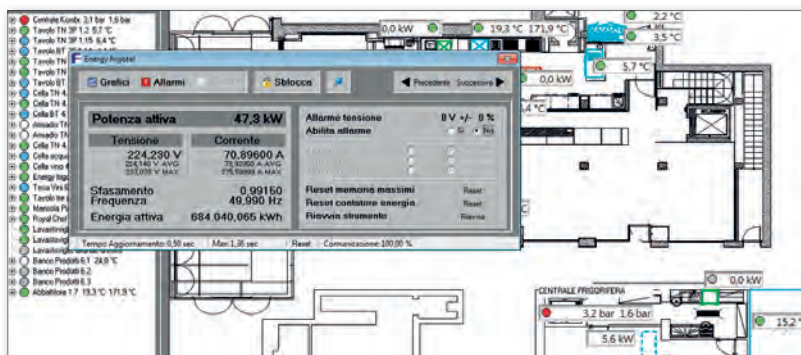
Il sistema di Supervisione Frigotel<sup>®</sup> consente di gestire da remoto il tuo impianto frigorifero. Rilevazioni dei consumi, allarmi dettagliati, statistiche e configurazioni dei parametri di esercizio direttamente dal tuo device preferito.

The Frigotel<sup>®</sup> Supervision system allows to manage from remote your refrigeration unit.



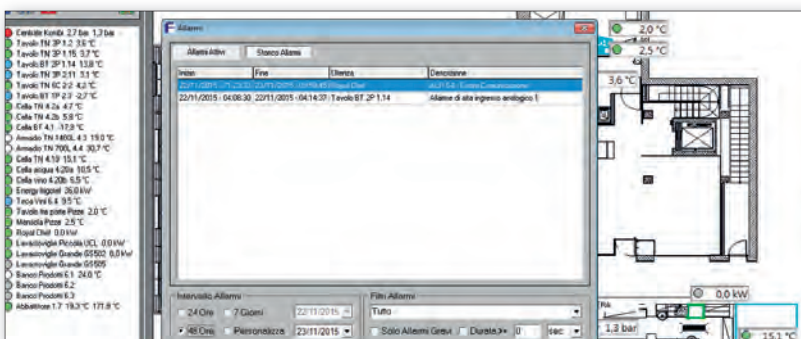
Schermata principale della supervisione: a sinistra l'elenco delle utenze frigorifere e a destra il loro posizionamento all'interno dei locali dell'impianto.

Supervision's main screen: to the left the list of refrigeration utilities and to the right their position inside the plant's rooms.



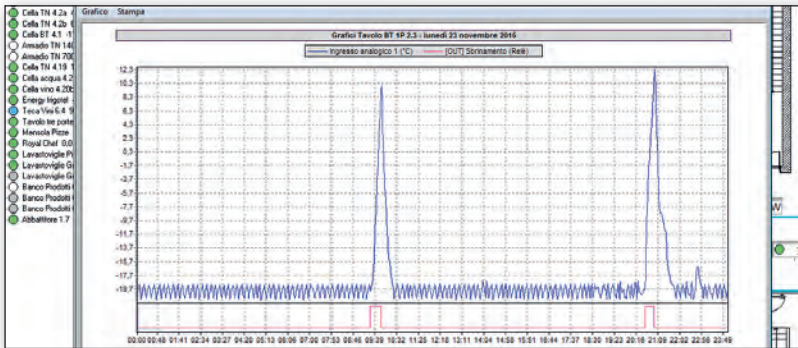
Finestra con il multimetro Frigotel per la rilevazione dei consumi elettrici.

Screen with the Frigotel multimeter for electrical consumption reading.



Finestra visualizzazione allarmi attivi e storico allarmi.

Screen with the visualization of active and past alarms.



Schermata con grafici relativi alla temperatura di funzionamento di un'utenza.

Screen with graphs relative to the working temperature of an utility.

VALORI SONDE  
Ingresso analogico 1 9.4 °C  
Ingresso analogico 2 -1.1 °C  
Ingresso analogico 3 10.8 °C

PARAMETRI  
Saturazione temperatura 5.8 °C  
Contenuto temperatura 2.8 °C  
LAL singola rel 16.8 °C  
LAL allarmi rel

Password: [input field]

Schermata con i parametri di una utenza protetti da richiesta password.

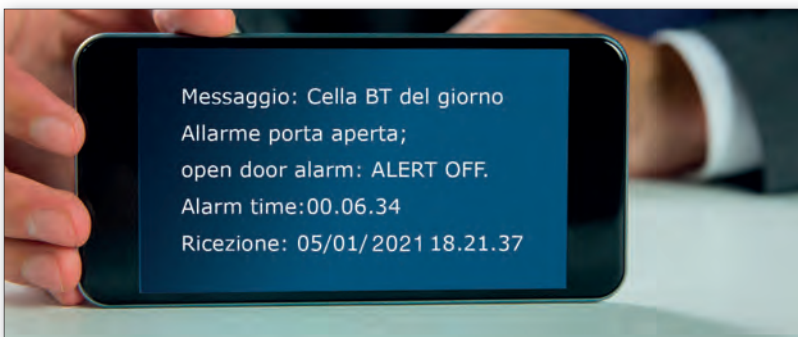
Screen with utility parameters protected by a password request.

Tabella  
Inquadroni Tabella  
23/11/2016

Tutolo	06:00	08:00	10:00	12:00	14:00	16:00	18:00	20:00
Centrali Bombi	2.3 bar	2.3 bar	2.3 bar	2.3 bar	2.3 bar	2.3 bar	2.3 bar	2.3 bar
Tavello TP 3P 3.2	2.9 °C	2.9 °C	2.9 °C	2.9 °C	2.9 °C	2.9 °C	2.9 °C	2.9 °C
Tavello TP 3P 3.16	4.4 °C	4.4 °C	4.4 °C	4.4 °C	4.4 °C	4.4 °C	4.4 °C	4.4 °C
Tavello BT 2P 3.16	-15.9 °C	-15.9 °C	-15.9 °C	-15.9 °C	-15.9 °C	-15.9 °C	-15.9 °C	-15.9 °C
Tavello TP 3P 2.11	2.9 °C	2.9 °C	2.9 °C	2.9 °C	2.9 °C	2.9 °C	2.9 °C	2.9 °C
Tavello TP 4C 2.2	3.7 °C	3.7 °C	3.7 °C	3.7 °C	3.7 °C	3.7 °C	3.7 °C	3.7 °C
Tavello BT 2P 2.9	-23.0 °C	-23.0 °C	-23.0 °C	-23.0 °C	-23.0 °C	-23.0 °C	-23.0 °C	-23.0 °C
Cella TP 4.2a	4.3 °C	4.3 °C	4.3 °C	4.3 °C	4.3 °C	4.3 °C	4.3 °C	4.3 °C
Cella TP 4.2b	4.9 °C	4.9 °C	4.9 °C	4.9 °C	4.9 °C	4.9 °C	4.9 °C	4.9 °C
Cella TP 4.2c	-19.9 °C	-19.9 °C	-19.9 °C	-19.9 °C	-19.9 °C	-19.9 °C	-19.9 °C	-19.9 °C
Armadillo TH 1400C 4.3	5.0 °C	5.0 °C	5.0 °C	5.0 °C	5.0 °C	5.0 °C	5.0 °C	5.0 °C
Armadillo TH 700C 4.4	4.9 °C	4.9 °C	4.9 °C	4.9 °C	4.9 °C	4.9 °C	4.9 °C	4.9 °C
Cella TP 4.2d	18.9 °C	18.9 °C	18.9 °C	18.9 °C	18.9 °C	18.9 °C	18.9 °C	18.9 °C
Cella acqua 3.20a	10.9 °C	9.9 °C	9.9 °C	10.9 °C	10.9 °C	10.9 °C	10.9 °C	10.9 °C
Cella vino 5.20a	4.9 °C	4.9 °C	4.9 °C	4.9 °C	4.9 °C	4.9 °C	4.9 °C	4.9 °C
Energy Frigotest	29.9 kW	29.9 kW	29.9 kW	29.9 kW	29.9 kW	29.9 kW	29.9 kW	29.9 kW
Teco Vini 6.3	10.9 °C	10.9 °C	10.9 °C	10.9 °C	10.9 °C	10.9 °C	10.9 °C	10.9 °C
Tavello tre porte 3.16a	2.1 °C	2.1 °C	2.1 °C	2.1 °C	2.1 °C	2.1 °C	2.1 °C	2.1 °C
Manoia Piza	2.9 °C	2.9 °C	2.9 °C	2.9 °C	2.9 °C	2.9 °C	2.9 °C	2.9 °C
Royal Chef	0.0 kW	0.0 kW	0.0 kW	0.0 kW	0.0 kW	0.0 kW	0.0 kW	0.0 kW
Lavastoviglie Picozza OCS	0.0 kW	0.0 kW	0.0 kW	0.0 kW	0.0 kW	0.0 kW	0.0 kW	0.0 kW
Lavastoviglie Grande 05502	0.0 kW	0.0 kW	0.0 kW	0.0 kW	0.0 kW	0.0 kW	0.0 kW	0.0 kW
Lavastoviglie Grande 05503	0.0 kW	0.0 kW	0.0 kW	0.0 kW	0.0 kW	0.0 kW	0.0 kW	0.0 kW
Banco Prodotti 6.3	26.0 °C	26.0 °C	26.0 °C	26.0 °C	26.0 °C	26.0 °C	26.0 °C	26.0 °C
Banco Prodotti 6.2	0.0 °C	0.0 °C	0.0 °C	0.0 °C	0.0 °C	0.0 °C	0.0 °C	0.0 °C
Banco Prodotti 6.1	0.0 °C	0.0 °C	0.0 °C	0.0 °C	0.0 °C	0.0 °C	0.0 °C	0.0 °C

Vista tabellare per la normativa HACCP. Visualizza fino a 12 campioni orari giornalieri con possibilità di stampa programmata.

Table view for the HACCP regulation. It shows up to 12 daily hourly samples with the possibility of a programmed print.



Segnalazione puntuale e precisa degli allarmi: viene indicato il nome dell'utenza che presenta l'anomalia, il tipo di anomalia riscontrata e l'ora di inizio. Una volta rientrato l'allarme il sistema invia un messaggio indicandone la durata.

Timely and accurate reporting of alarms: displays the name of the utility that presents the fault, the type of anomaly and when it started. Once the alarm has been solved, the system sends a message with the duration.





## Indice

<b>Polofin group</b>	<b>2</b>
<b>Le aziende del gruppo</b>	<b>3</b>
<b>Le attività delle aziende del gruppo</b>	<b>4</b>
<b>Le nostre competenze</b>	<b>6</b>
<b>Le persone</b>	<b>8</b>
<b>Sedi</b>	<b>10</b>
<b>I nostri marchi</b>	<b>12</b>
<b>Progettazione e produzione interna</b>	<b>14</b>
<b>Cibin:</b>	<b>24</b>
<b>Monoblocchi</b>	<b>24</b>
<b>Trailer</b>	<b>26</b>
<b>Cantine</b>	<b>28</b>
<b>Impianti frigoriferi centralizzati per la ristorazione</b>	<b>40</b>
<b>Keyfrost:</b>	<b>56</b>
<b>Industria del vetro - Camere bianche</b>	<b>56</b>
<b>Keyglass: installazioni nel mondo</b>	<b>60</b>
<b>Industria alimentare: salumifici</b>	<b>62</b>
<b>Industria alimentare: lavorazione e conservazione del pesce</b>	<b>66</b>
<b>Industria alimentare: caseifici</b>	<b>68</b>
<b>Centrali frigorifere per GDO</b>	<b>70</b>
<b>Abbattitori</b>	<b>72</b>
<b>Krios:</b>	<b>74</b>
<b>Componenti e meccanica di precisione</b>	<b>74</b>
<b>Frigotel:</b>	<b>88</b>



## Index

<b>Polofin group</b>	<b>2</b>
<b>The group companies</b>	<b>3</b>
<b>The activities of the group companies</b>	<b>4</b>
<b>Our expertise</b>	<b>6</b>
<b>Staff</b>	<b>8</b>
<b>Plants</b>	<b>10</b>
<b>Our brands</b>	<b>12</b>
<b>Internal engineering and manufacturing</b>	<b>14</b>
<b>Monoblocks</b>	<b>24</b>
<b>Cibin:</b>	<b>24</b>
<b>Trailer</b>	<b>26</b>
<b>Wine displays and cellars</b>	<b>28</b>
<b>Central refrigeration systems for the catering industry</b>	<b>40</b>
<b>Glass industry - Clean rooms</b>	<b>56</b>
<b>Keyfrost:</b>	<b>56</b>
<b>Keyfrost: worldwide installations</b>	<b>60</b>
<b>Cured meats industry</b>	<b>62</b>
<b>Industry processing and preserving of fish</b>	<b>66</b>
<b>Cheese factory</b>	<b>68</b>
<b>Refrigeration pack unit for large scale distribution</b>	<b>70</b>
<b>Blast chillers</b>	<b>72</b>
<b>Krios:</b>	<b>74</b>
<b>Precision mechanics and technical components</b>	<b>74</b>
<b>Frigotel:</b>	<b>88</b>





Descrizioni, dati tecnici ed illustrazioni sono indicativi e non vincolanti. Polofin srl si riserva il diritto, per ragioni tecniche e commerciali, di apportare in qualsiasi momento e senza preavviso, modifiche ritenute necessarie.

Descriptions, technical data and illustrations are to be considered as indicative and are not binding. For technical and commercial reasons, Polofin srl reserves the right to introduce - at any time and without prior notice - any necessary modifications.







**POLOFIN Srl**  
Via Trezza, 49  
30027 San Donà di Piave  
Venezia - Italy  
Tel.+39 0421 226711  
[www.polofin.com](http://www.polofin.com)

I Marchi: "POLOFIN", "KEYFROST", "CIBIN", "KRIOS", "FRIGOTEL" sono Depositati.

